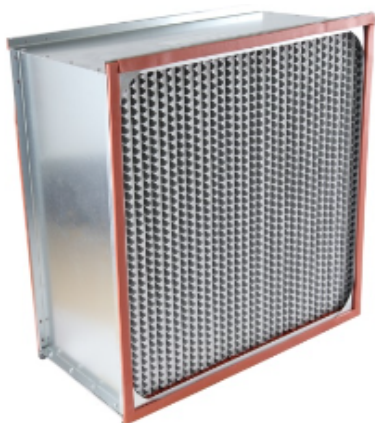


# FILT LAB



## AEROCEL - HT

AeroCel-HT provides high efficiency filtration. Aluminum separator add rigidity to the construction and increase stabilization air flow. Galvanized steel frame with header (Options : single / double / none ) High temperature resistance up to (Options : 250 / 350 °C)

## SPECTATION

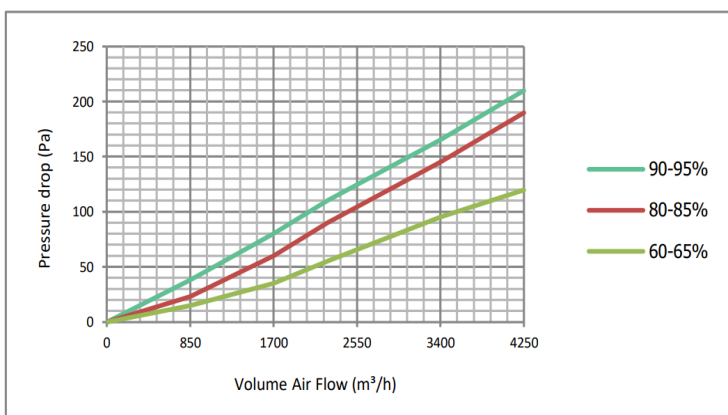
Nominal Size W x H x D (in)	Actual Size W x H x D (mm)	Efficiency (%) ON 0.3MICRON	Filter Class EN779	Rated Air Flow (CMH)	Initial Pressure Drop (Pa)	Final Pressure Drop (Pa)
24 x 24 x 12	592 x 592 x 292	90-95%	8	3400	140	450
12 x 24 x 12	287 x 592 x 292	90-95%	8	1700	140	450
24 x 24 x 6	592 x 592 x 149	90-95%	8	3400	140	450
12 x 24 x 6	287 x 592 x 149	90-95%	8	1700	140	450
24 x 24 x 12	592 x 592 x 292	80-85%	7	3400	125	450
12 x 24 x 12	287 x 592 x 292	80-85%	7	1700	125	450
24 x 24 x 6	592 x 592 x 149	80-85%	7	3400	125	450
12 x 24 x 6	287 x 592 x 149	80-85%	7	1700	125	450
24 x 24 x 12	592 x 592 x 292	60-65%	6	3400	100	450
12 x 24 x 12	287 x 592 x 292	60-65%	6	1700	100	450
24 x 24 x 6	592 x 592 x 149	60-65%	6	3400	100	450
12 x 24 x 6	287 x 592 x 149	60-65%	6	1700	100	450

## Operating Condition

Temperature	250-300°C
Humidity Limit	95%RH

## Material

Frame	Galvanized Steel
Filter Media	Glass Fiber
Separator	Aluminum
Sealant	Polyurethane
Header	Single, Double or None
Gasket	Glass Fiber



Pressure drop diagram valid for size 592 mm x 592 mm